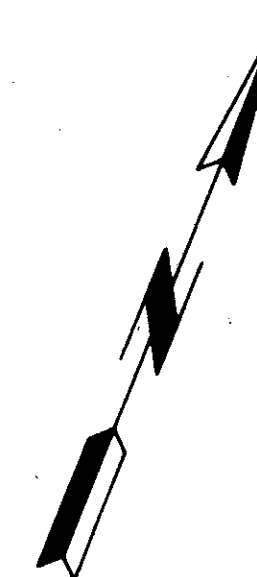
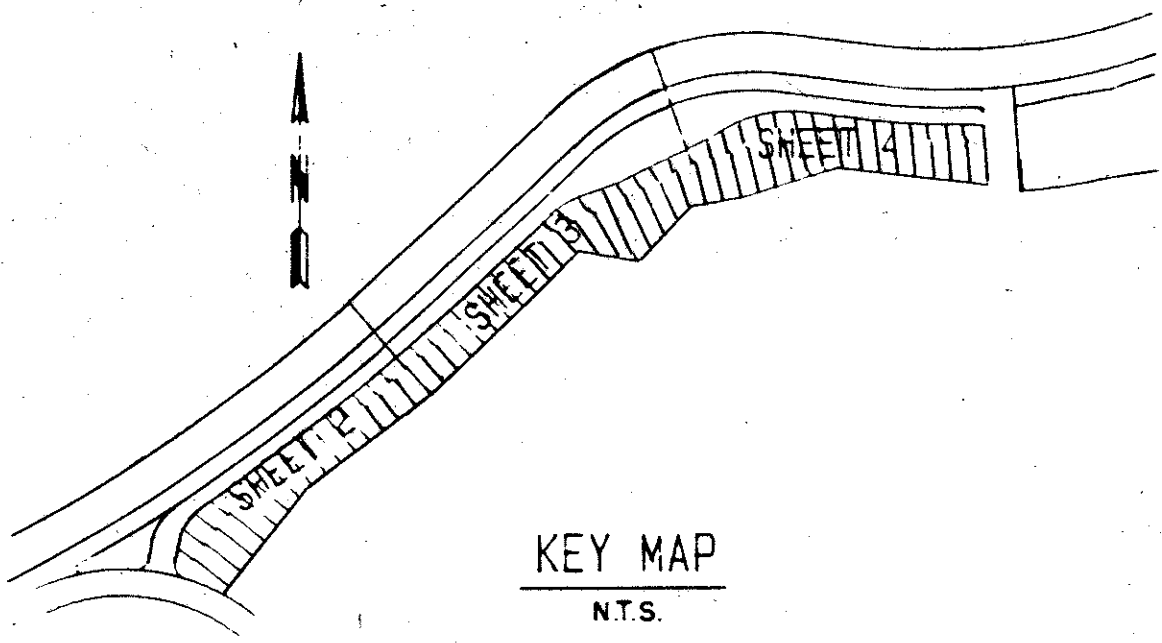
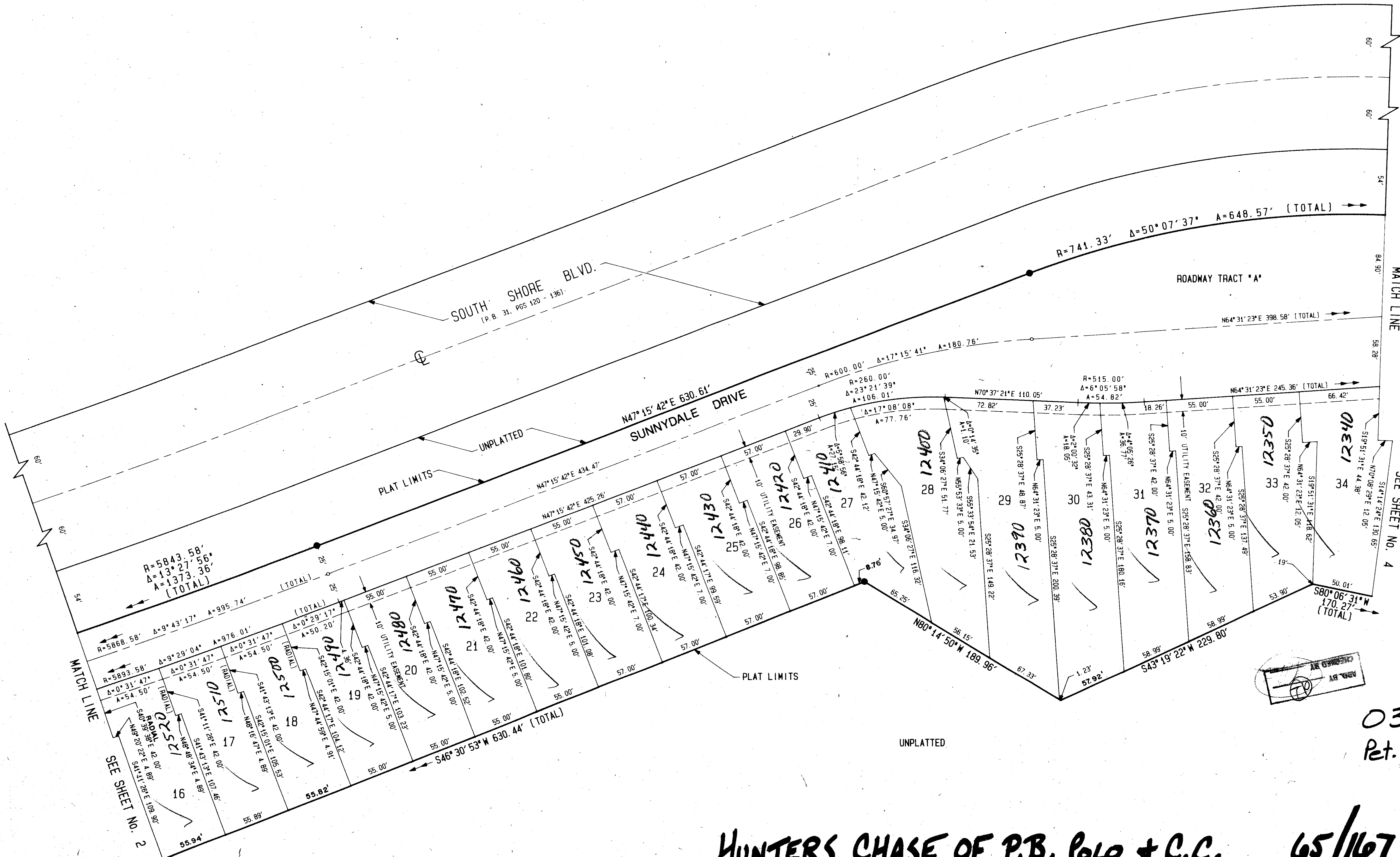


HUNTERS CHASE
OF PALM BEACH POLO & COUNTRY CLUB
 WELLINGTON P. O. D.
 IN PART OF SEC. 15, TWP. 44S, RGE. 41E
 PALM BEACH COUNTY, FLORIDA
 IN FOUR SHEETS SHEET NO. 3

GEE & JENSON
 ENGINEERS - ARCHITECTS - PLANNERS, INC.
 WEST PALM BEACH, FLORIDA
 AUGUST 1989
 SCALE IN FEET SCALE 1"=40'



STATE OF FLORIDA
 COUNTY OF PALM BEACH
 This plat was filed for
 record at _____ M. this _____ day
 of _____ 1990, and duly
 recorded in Plat Book No. _____
 on Pages _____ thru _____
 JOHN B. DUNKLE
 Clerk Circuit Court
 By: _____ C. C.



TAZ 72B

HUNTERS CHASE OF PALM BEACH
 SUBDIVISION PALM BEACH POLO & C.C.
 PAGE 167
 FLOOD MAP 100B
 ZONING AR
 QUAD 65
 SE 86-32
 ZIP CODE 33414
 PUD NAME WELLINGTON P.U.D.

COMPUTED D. M. LEI
 DRAWN W. R. JONES
 CHECKED [Signature]
 APPROVED [Signature]
 REVISION

0332-087
 Plat. 86-32

HUNTERS CHASE OF P.B. POLO & C.C. 65/167